



# **HANCOCK COUNTY COMPREHENSIVE JUSTICE FACILITIES Schematic Design Update**

April 25, 2018

# Initial Study Overview

## **Judicial Components included in the initial Facilities' Needs Assessment Study were:**

- Community Corrections
- Probation
- Prosecutor's Office
- Jail
- Sheriff's Office
- Courts

# Analytics Summary

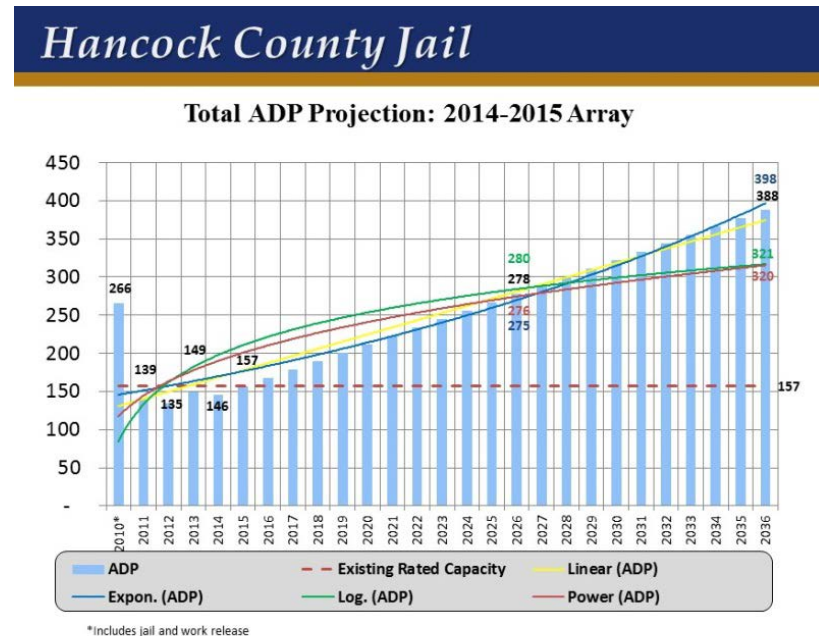
- Average Daily Jail Population (ADP)**

**Current Rated Capacity: 157 Beds\***

- **2013 Average:**  
 $149 + 20\% \text{Classification} + \text{Medical} = 184 \text{ Beds}$
- **2014 Average:**  
 $148 + 20\% \text{Classification} + \text{Medical} = 183 \text{ Beds}$
- **2015 Average:**  
 $156 + 20\% \text{Classification} + \text{Medical} = 192 \text{ Beds}$
- **2016 Average:**  
 $176 + 20\% \text{Classification} + \text{Medical} = 220 \text{ Beds}$

**2035 Projection: 438\***

**Projected Increase of 61%**



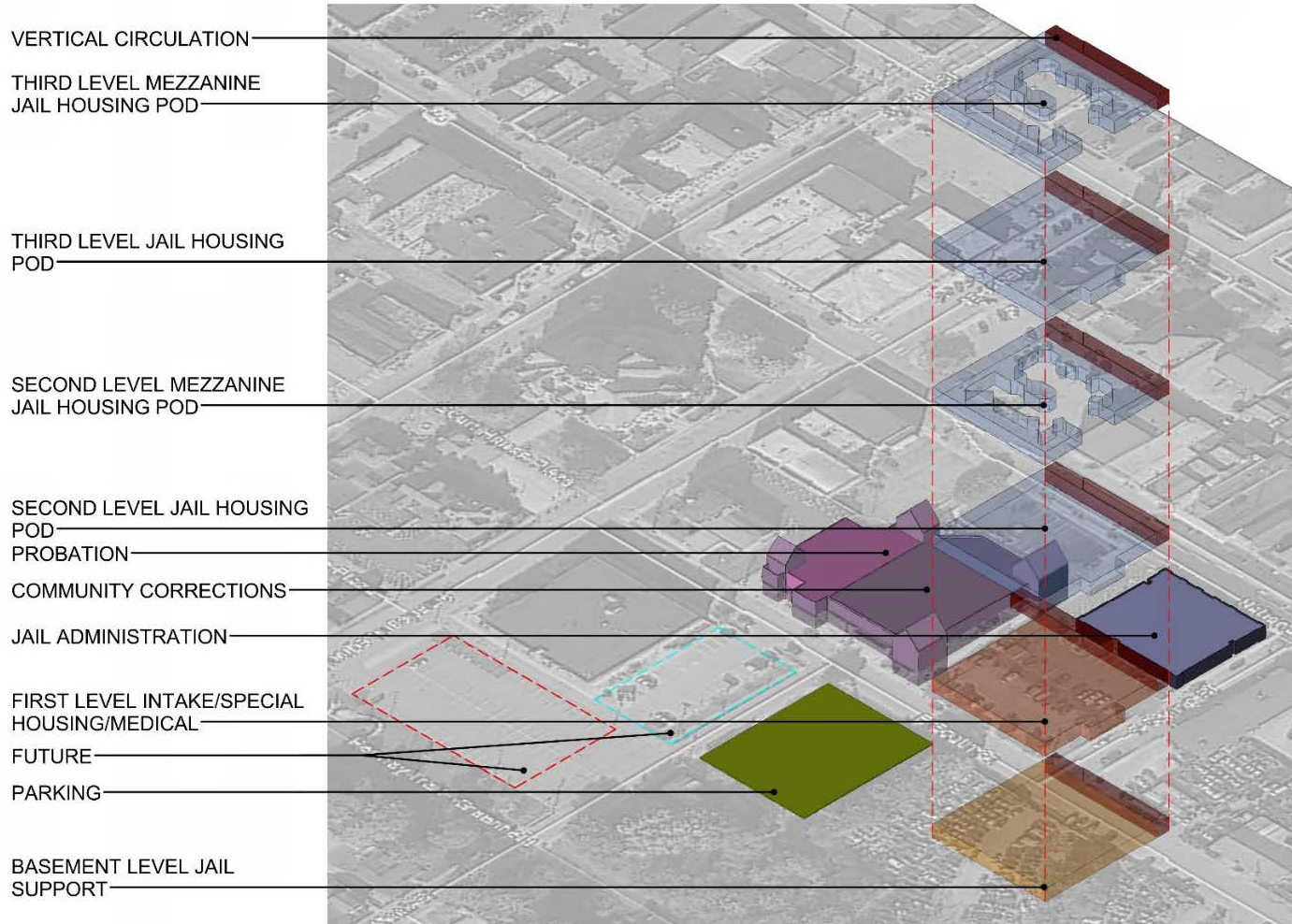
# Hancock County Jail Capacity Calculations

- Jail Capacity Calculation: 20 Year
- ADP (Average Daily Population)
- Projections (2035) **313 – 360 (Rated Beds)**
- Classification Factor @ 15% - 20 **63 – 72 (Rated Beds)**
- Intake + Medical **15 – 25 (Non-rated Beds)**
- Total Recommended Capacity **391 – 457 Beds**

\*Existing Jail Rated Capacity :  $126 + 22(\text{Classification}) + 9(\text{Intake/Medical}) = 157$



# Study Proposed Solution



# Original Site Investigation

- **Geotechnical Discoveries**
  - Unsuitable Soils
  - High Water Table
  - Expanded Flood Plain
  - Cost Prohibitive

# Program Discoveries

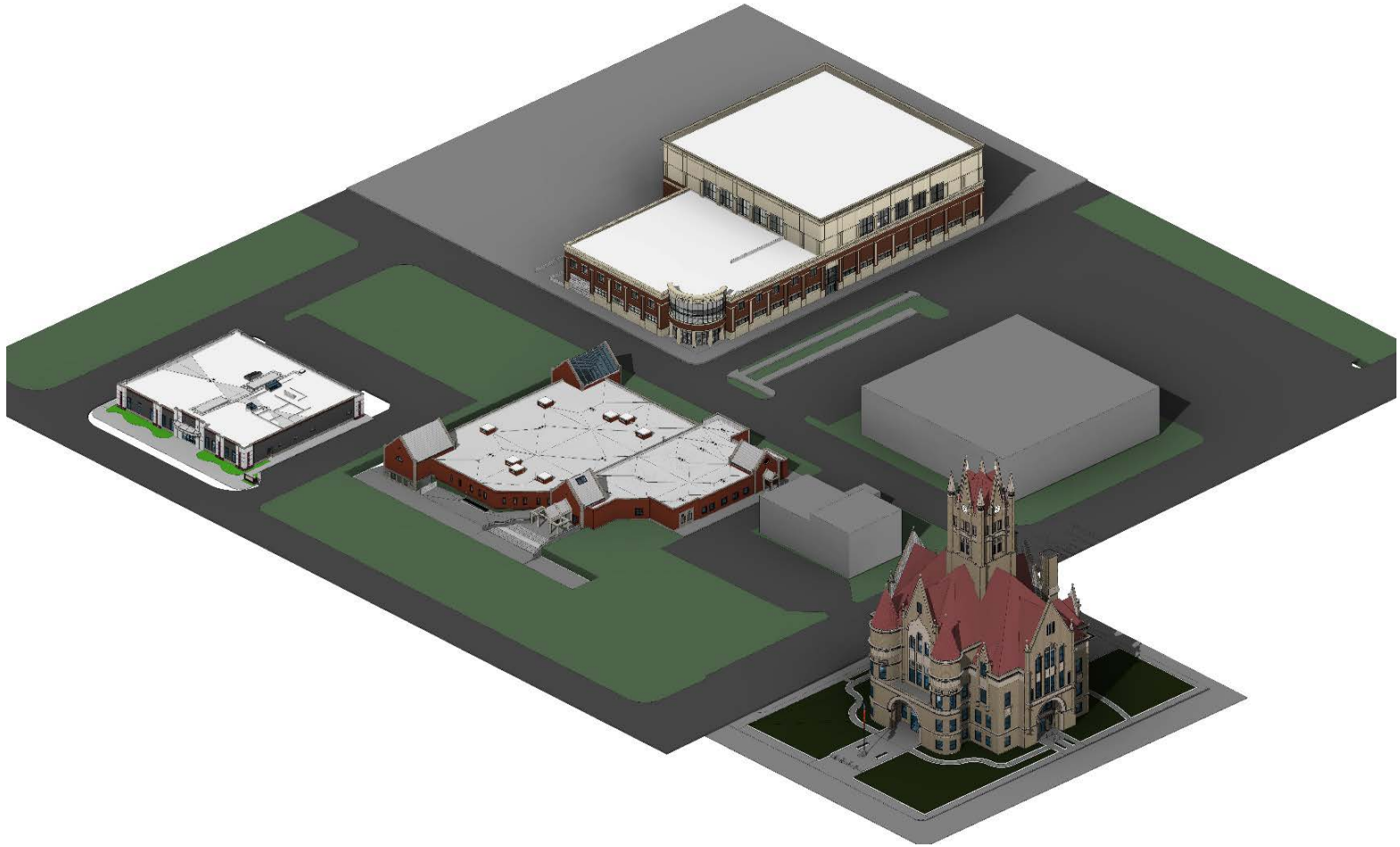
	Existing Actual SQ.FT	Proposed SQ.FT.
Prosecutor Option 1	5317	5133
Prosecutor Option 2	5317	12206
Probation	4511	14622
Community Corrections	12206	24895
Jail	39153	125377
New Jail Basement		35435
New Jail 1st Admin		13447
New Jail 2nd Admin		14001
New Jail 1st Pod		31247
New Jail 2nd Pod		31247

# Updated Site Plan

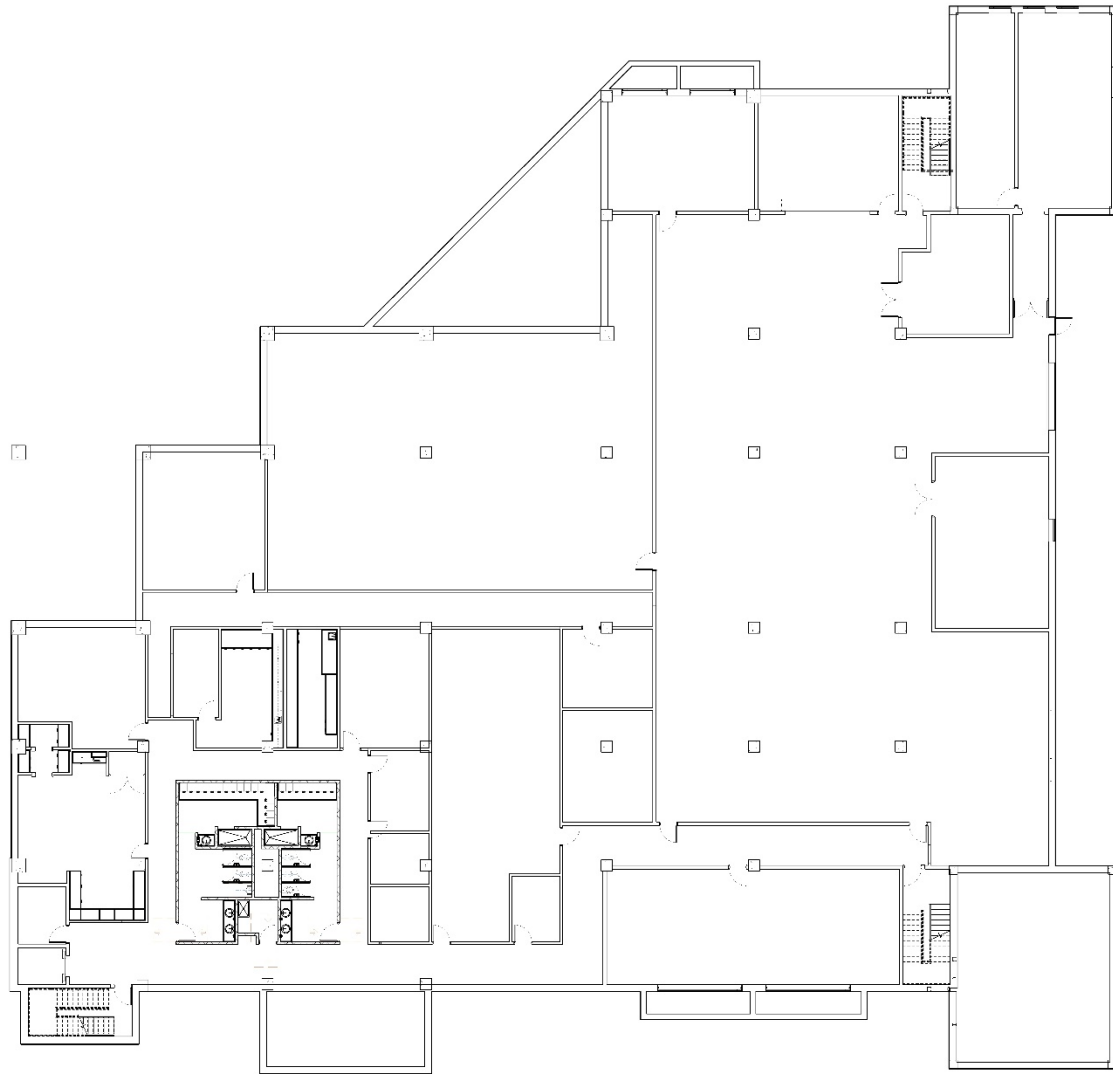




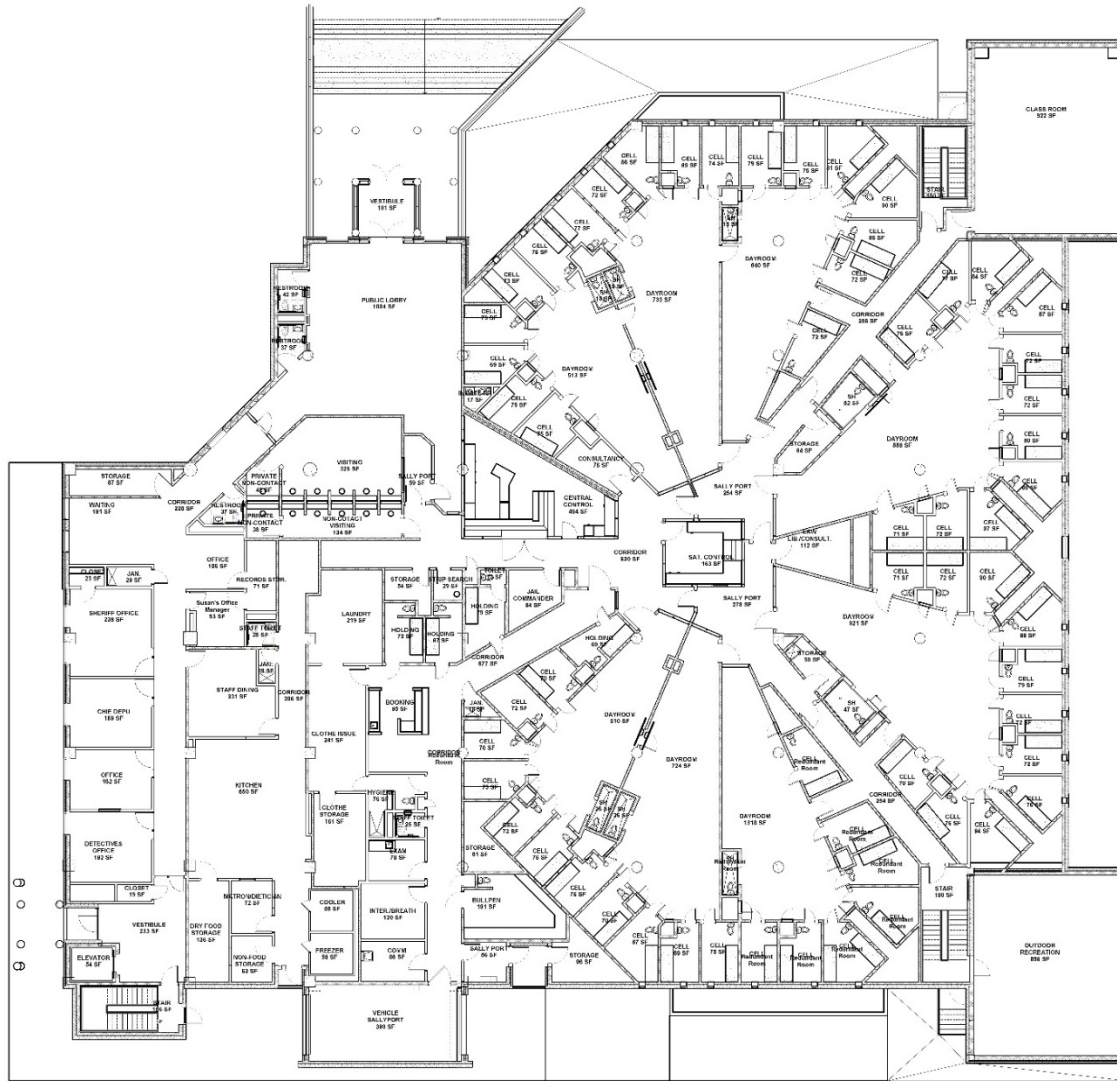
# Updated Site Plan Axonometric



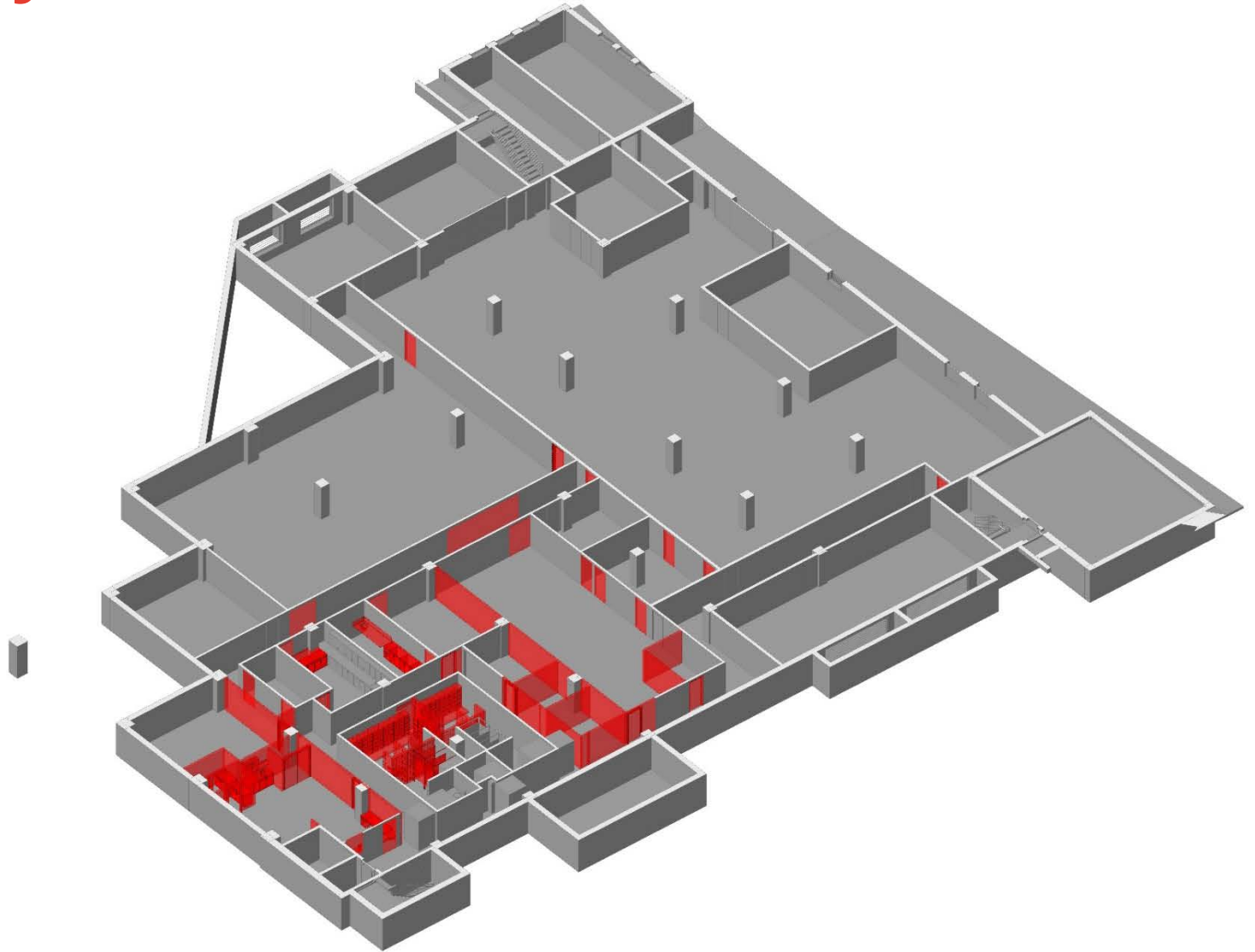
# Existing Jail Existing Basement Floor Plan



# Existing Jail Existing First Floor Plan

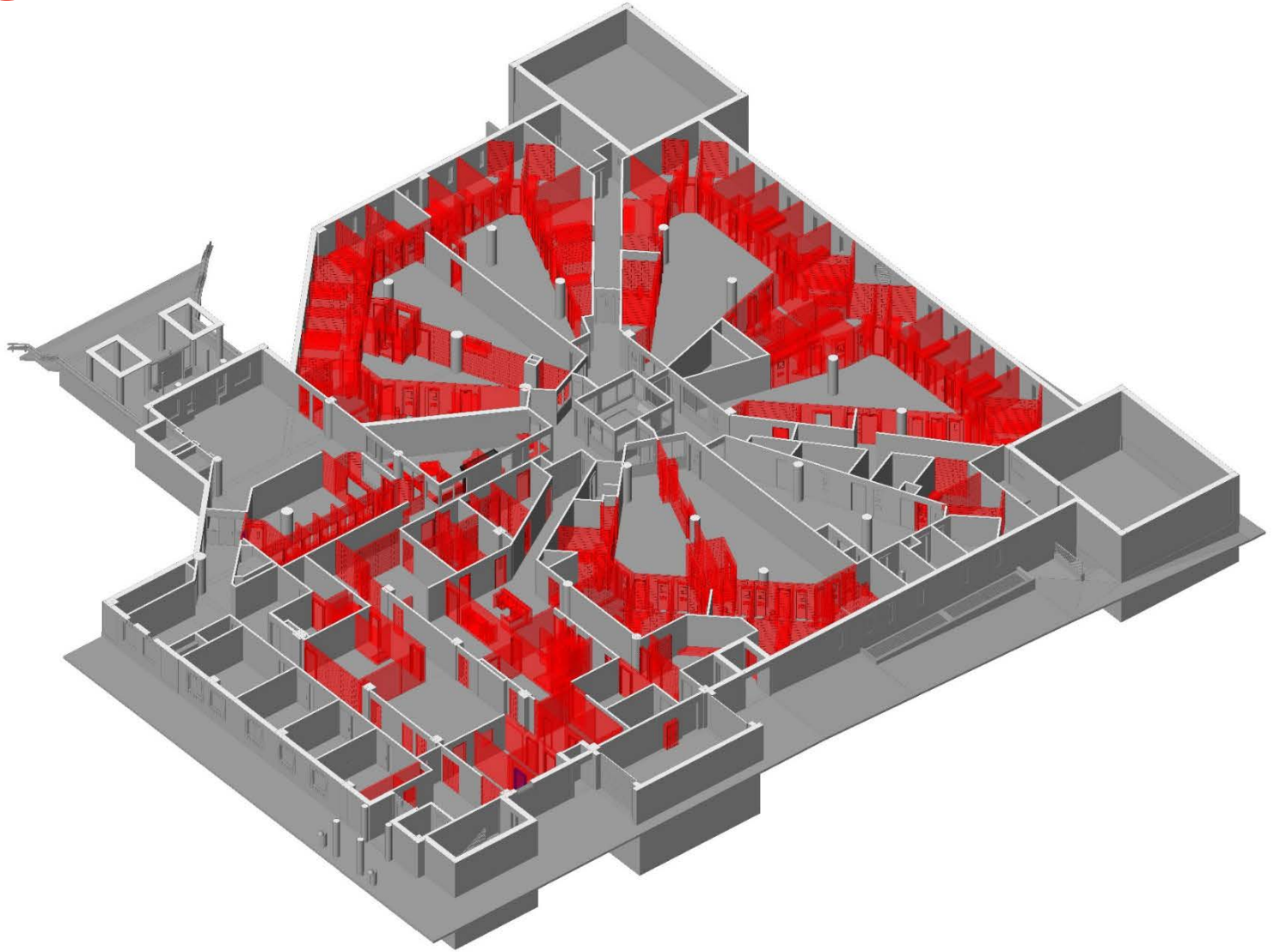


# Existing Jail Demolition Basement Floor Plan





# Existing Jail Demolition First Floor Plan



# Existing Jail New Basement Floor Plan



39153 sf

# Existing Jail New First Floor Plan

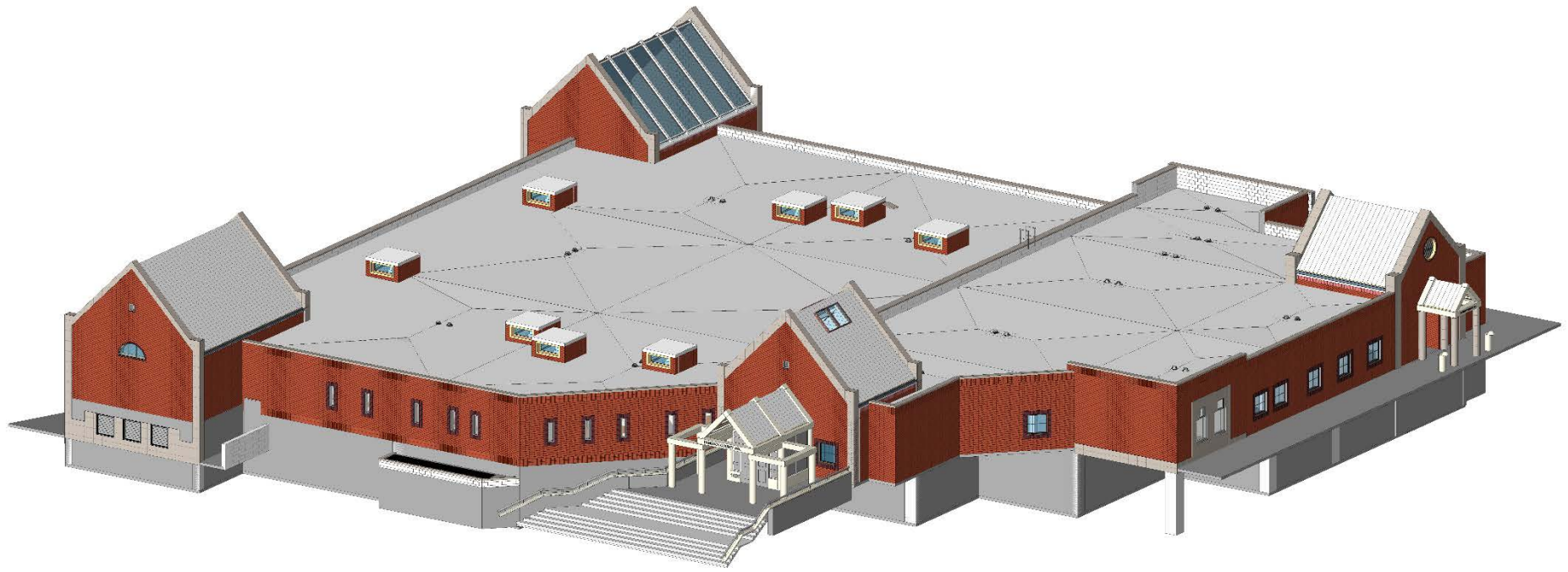
Color Key

- Shared / Special Use
- COMMUNITY CORRECTIONS
- JUVENILE PROBATION
- Support
- Circulation



39153 sf

# Existing Jail Axonometric

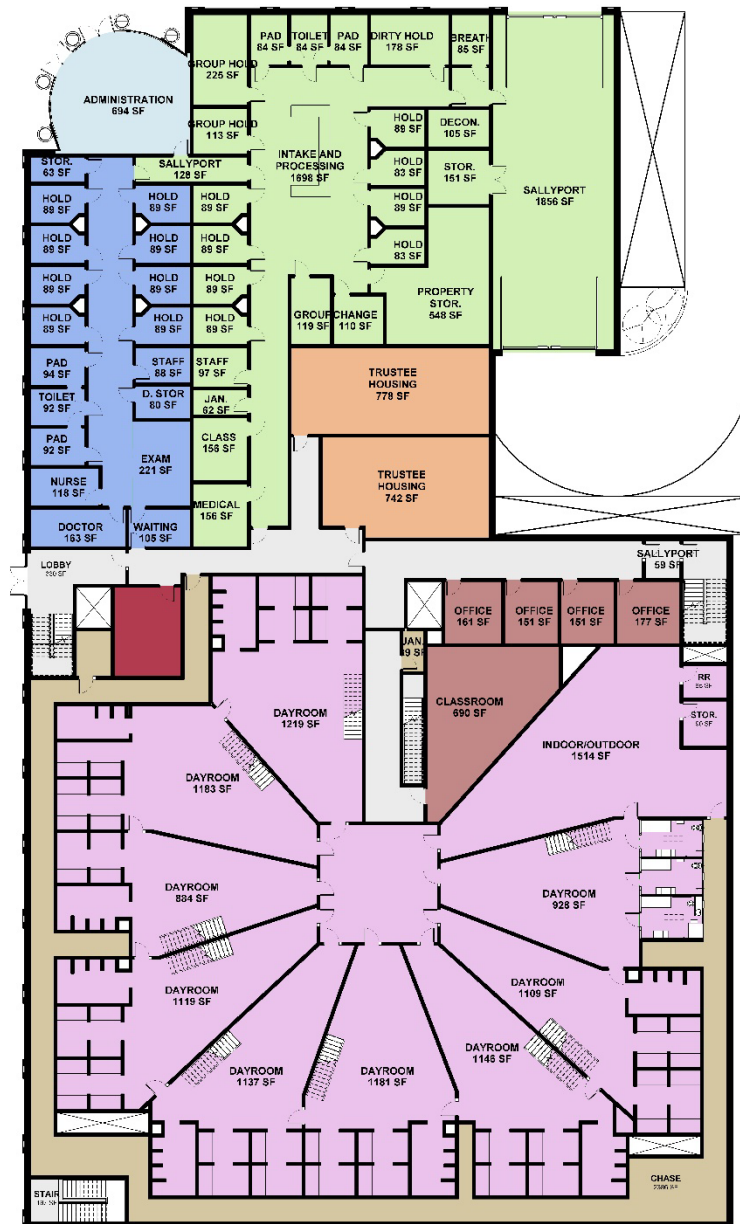




# Proposed New Jail Basement Plan



# Proposed New Jail First Floor Plan



Color Key

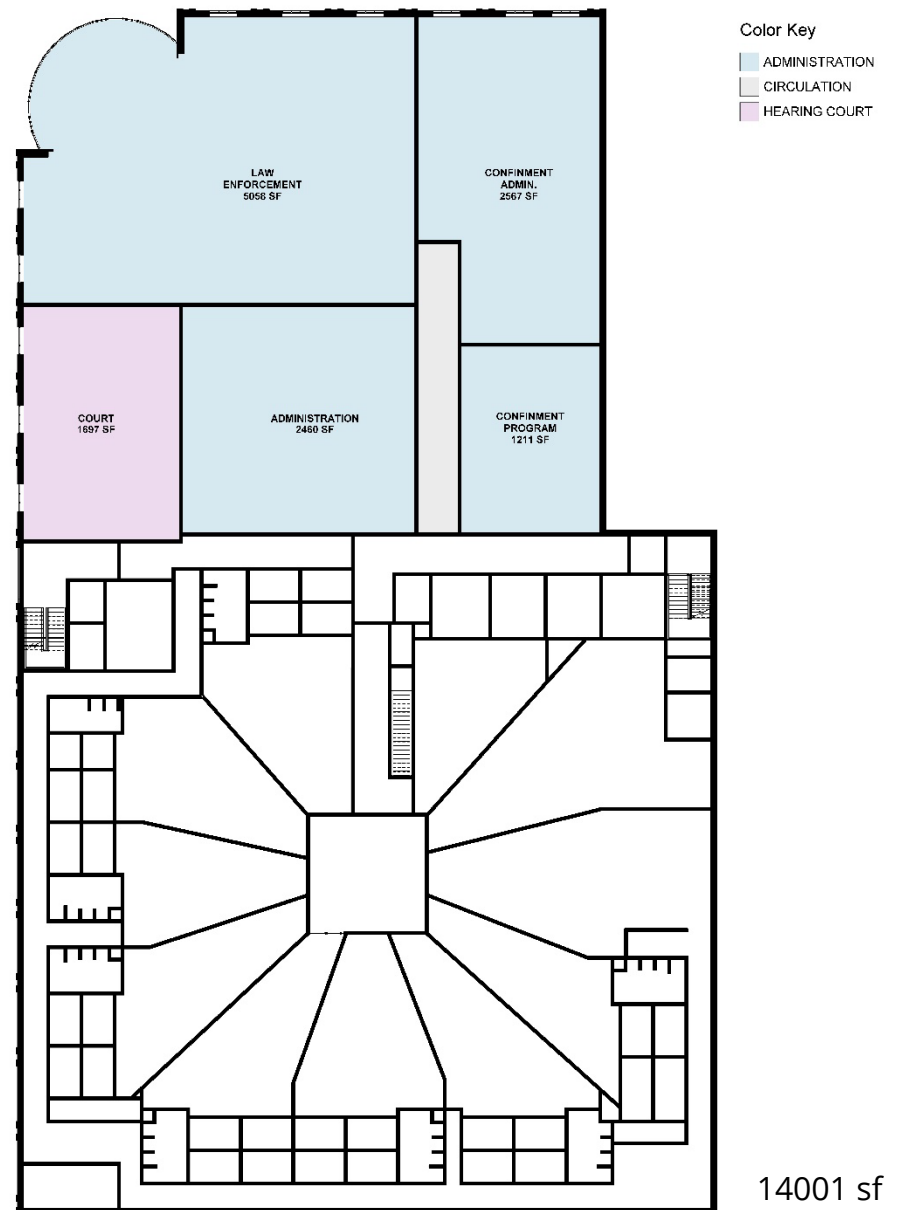
ADMINISTRATION
CIRCULATION
Shared / Special Use
DETENTION
INTAKE
Support
MEDICAL
PROGRAM
TRUSTEE

## Approximate Bed Count

Medical/Intake: 20 Beds  
 Trustee: 24 Beds (12 each)  
 1<sup>st</sup> Floor: 186 Dorms, 12 Cells  
 2<sup>nd</sup> Floor: 48 Dorms, 132 Cells

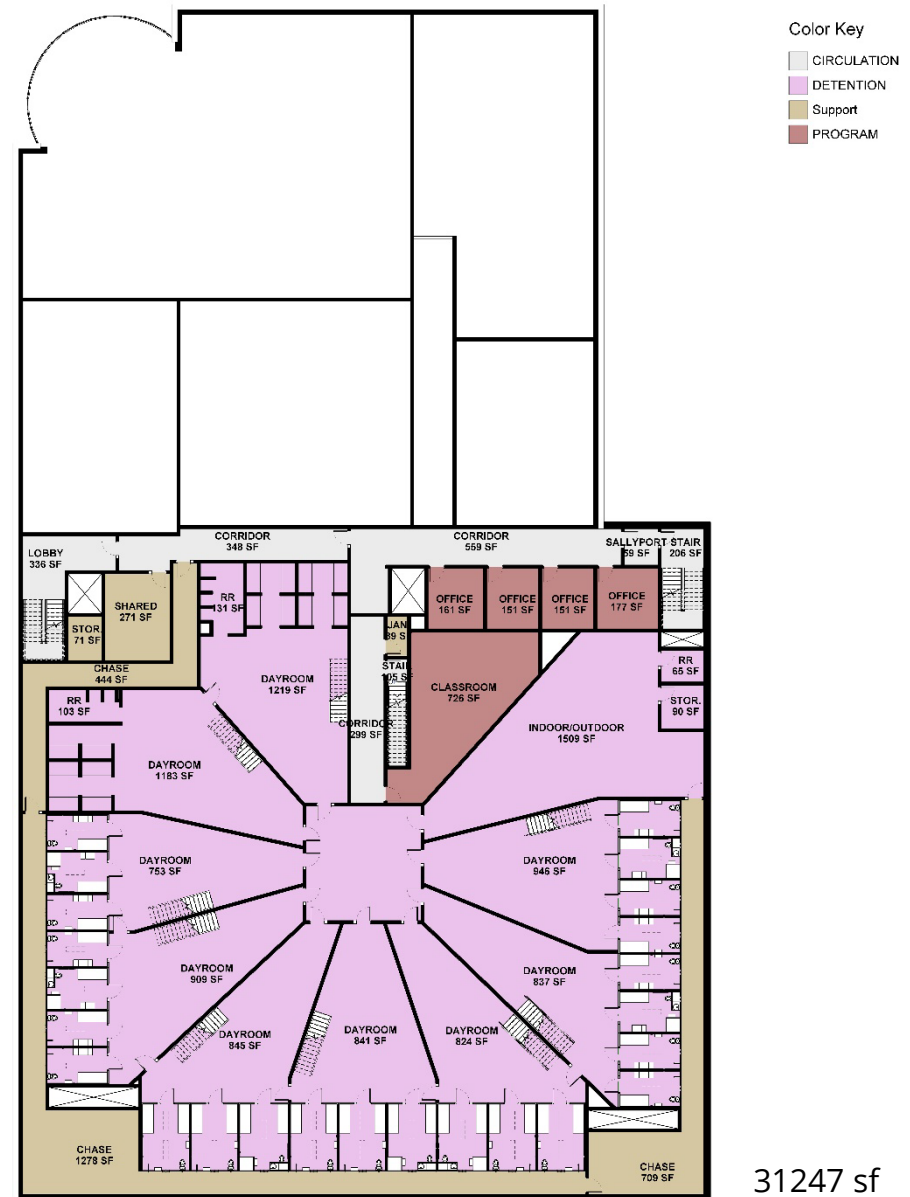
44694 sf

# Proposed New Jail Second Floor Admin Plan



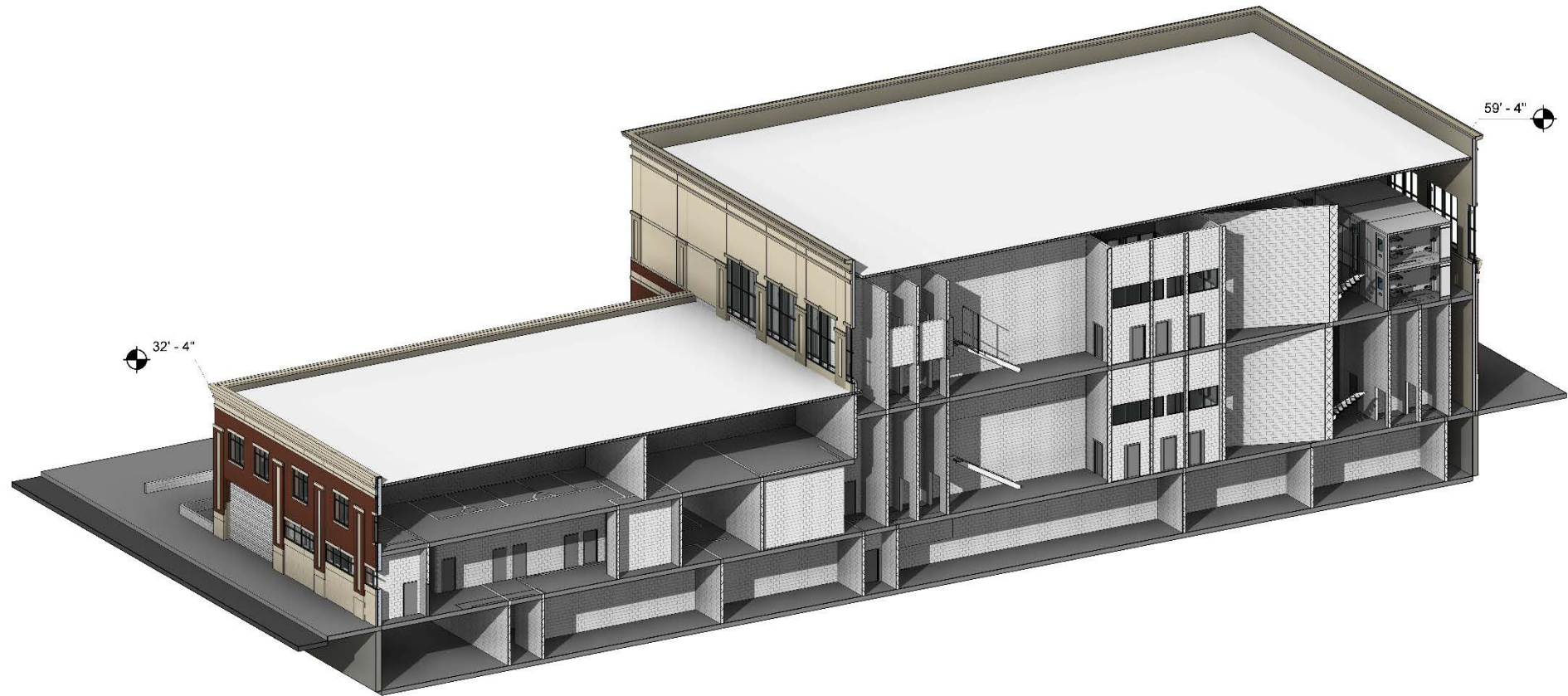
# Proposed New Jail Second Floor Jail Pod Plan

**Approximate Bed Count**  
 Medical/Intake: 20 Beds  
 Trustee: 24 Beds (12 each)  
 1<sup>st</sup> Floor: 186 Dorms, 12 Cells  
 2<sup>nd</sup> Floor: 48 Dorms, 132 Cells





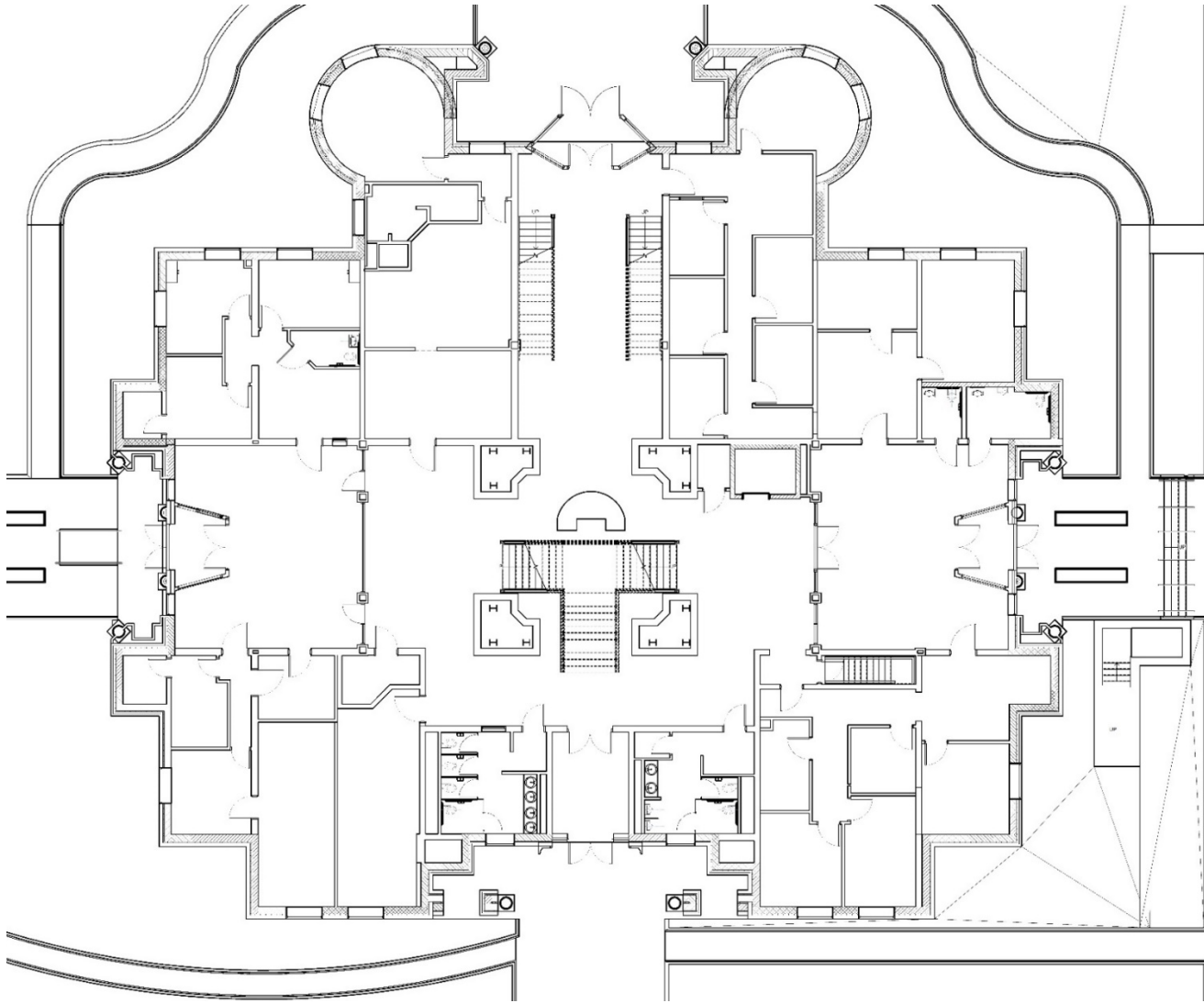
# Proposed New Jail Building Section



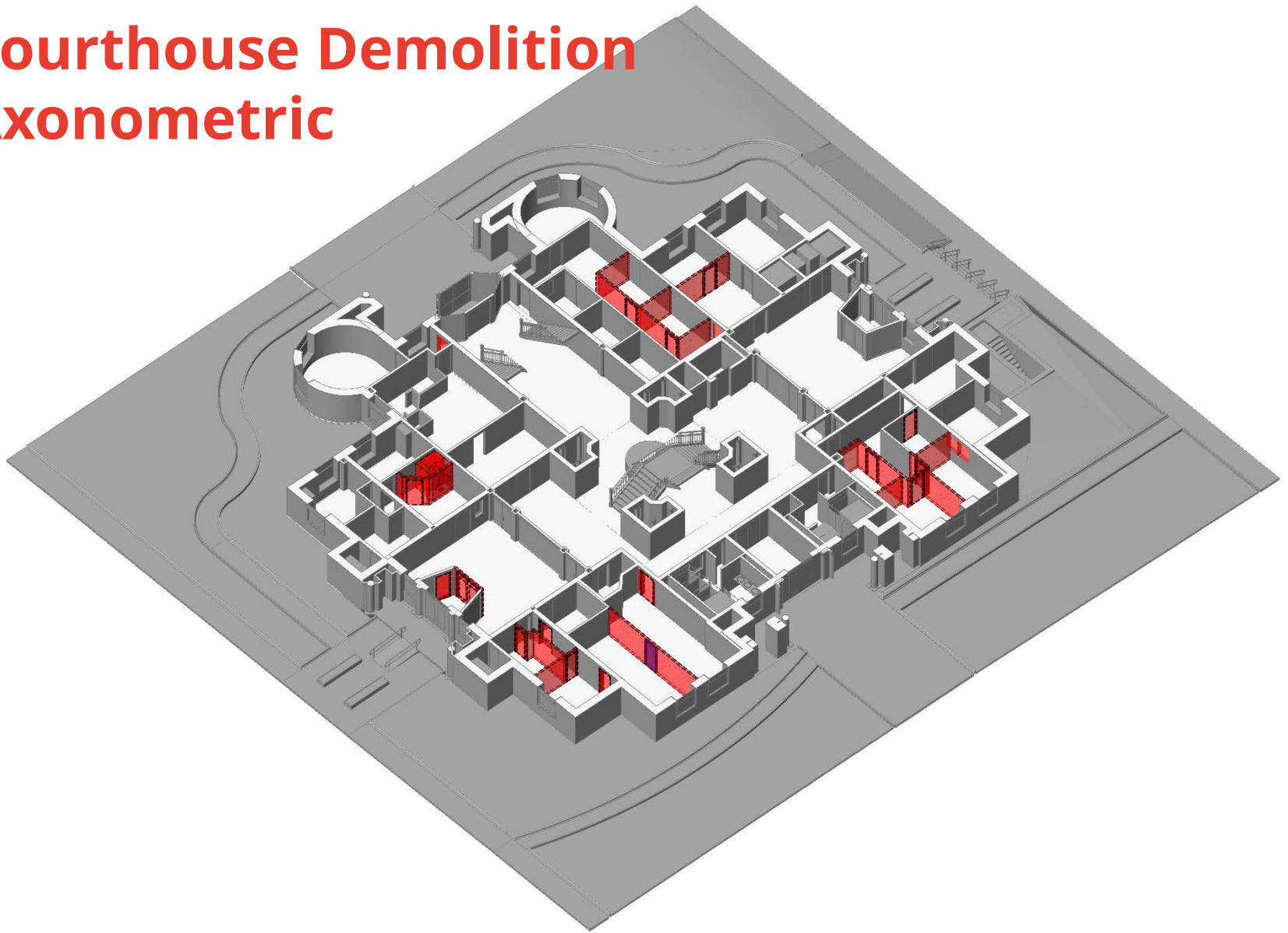




# Courthouse Existing Floor Plan



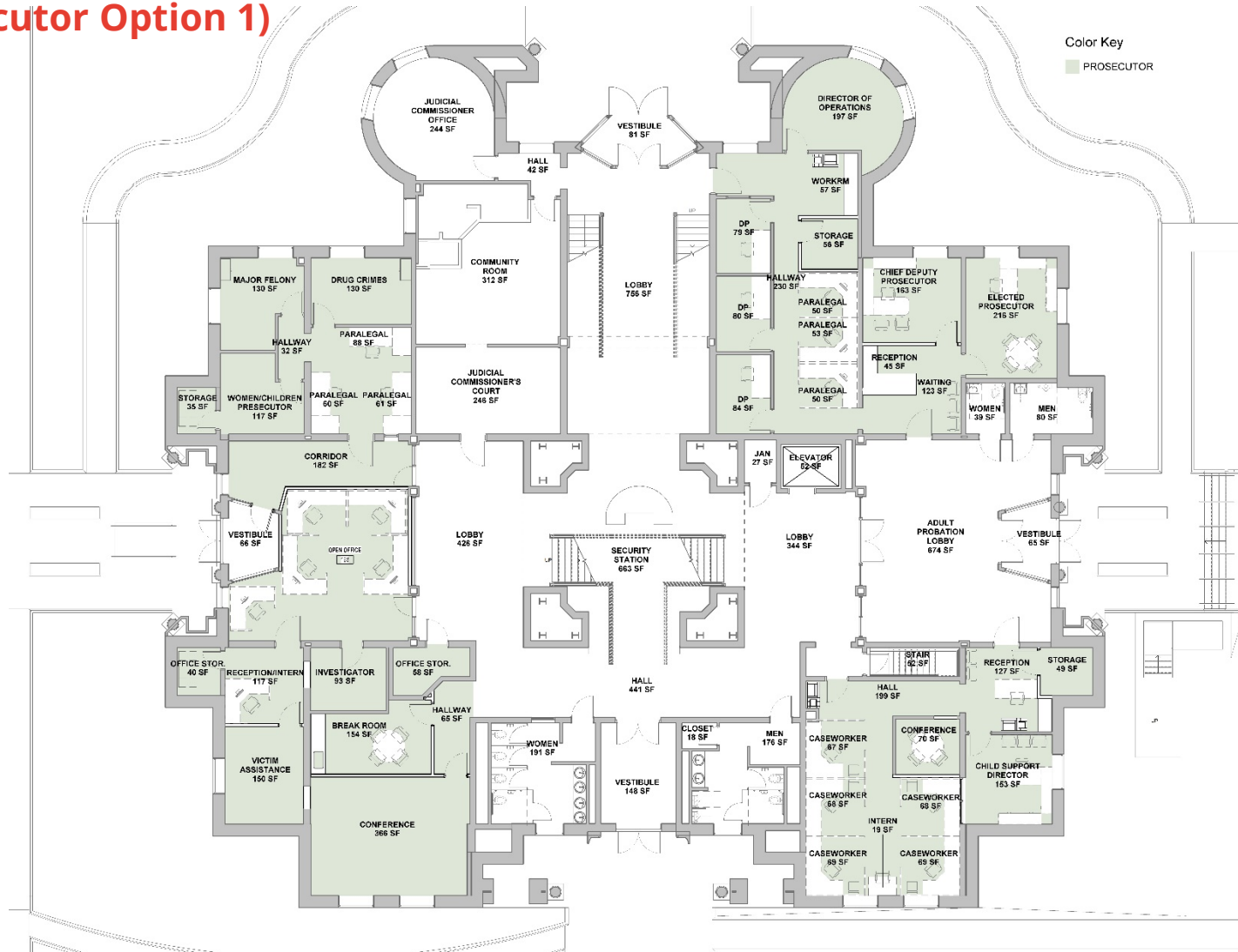
# Courthouse Demolition Axonometric





# Courthouse Proposed Floor Plan

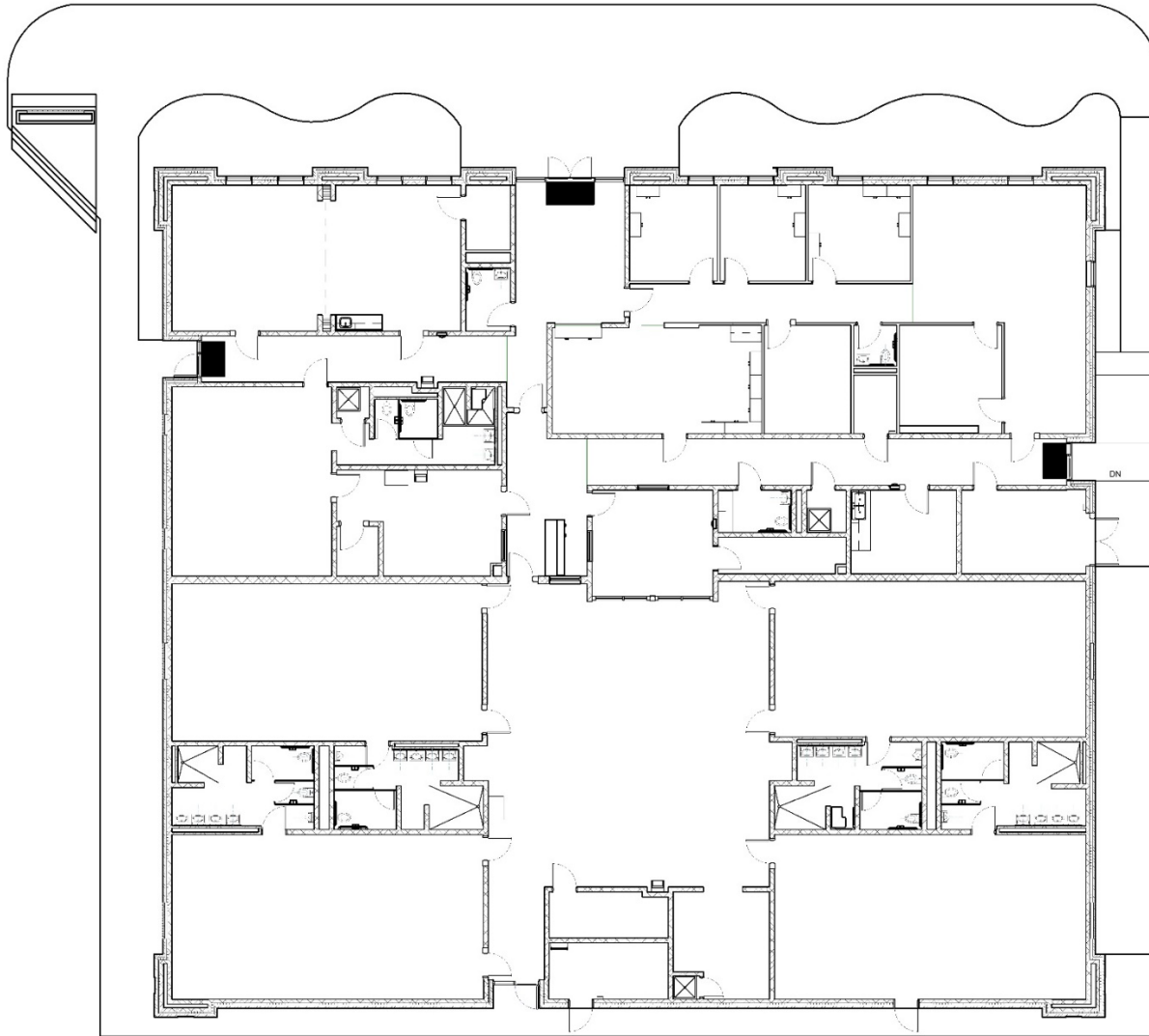
(Prosecutor Option 1)



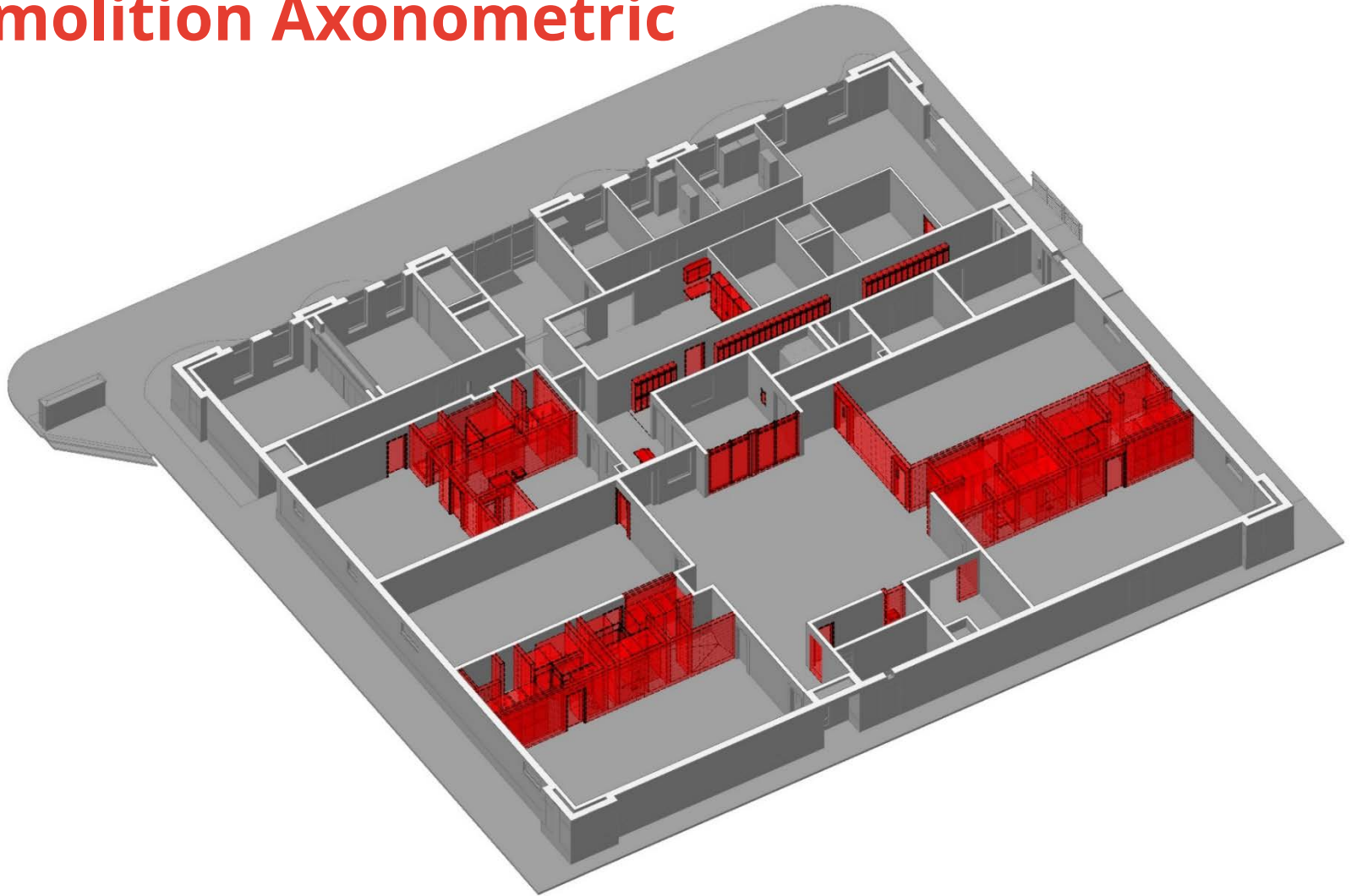
# Courthouse Axonometric



# Existing Community Corrections Floor Plan



# Existing Community Corrections Demolition Axonometric



# Existing Community Corrections Building

## Proposed Floor Plan (Prosecutor Option 2)





# Existing Community Corrections Axonometric



# Q&A

